

Camclosure® 2 Series Mounts

PENDANT, WALL, AND FLUSH MOUNTS

Product Features

- Specifically Designed to Compliment All Camclosure® 2 Series Camera Systems
- Indoor and Outdoor Use
- Pendant Options for All Models
- Durable Aluminum Construction on IS50/IS51 Series Models
- IS50/IS51 Series is Compatible with Many Pelco Mounts
- Integrated Wall Mounts in IS20/IS21 Series
- Flush Mount Kits Available for All Models



IS50 SHOWN WITH
IS50-P PENDANT ADAPTER
AND SWM-SR WALL MOUNT (OPTIONAL)

The **Camclosure® 2 Series** mounts offer versatile alternative mounting options for Pelco's Camclosure 2 Series camera systems when a surface or flush (in-ceiling) installation location is not available. These economical mounts are designed specifically for the Camclosure 2 Series, ensuring ease of installation and cohesion in the look of the Camclosure 2 lineup.

The **IS20 and IS20DWS Series** indoor mounts are available in pendant, wall, and flush models to complement any installation. All of the mounts are color matched and made from rugged ABS plastic, which is sonic welded for strength and designed with the installer in mind. The **IS20 and IS20DWS Series** mounts provide internal cable routing to conceal wiring. The pendant models are compatible with 3/4-inch and 25 mm conduit fittings, making them universal worldwide. The wall mount models attach easily to a solid surface or junction box using the supplied adapter plate. The flush mount kit modifies a surface mount camera for in-ceiling installations if the installation environment should change after the original deployment.

The **IS50 Series** outdoor mounts are available in pendant and flush models. The **IS50 Series** pendant is equipped with a 1.5-inch NPT thread for easy mounting. In addition, the pendant model can be paired with Pelco's SWM-SR for wall mount installations. The **IS50 Series** mounts are color matched, made from cast aluminum for strength and weather protection, and provide internal cable routing to conceal wiring.



by Schneider Electric

International Standards
Organization Registered Firm;
ISO 9001 Quality System



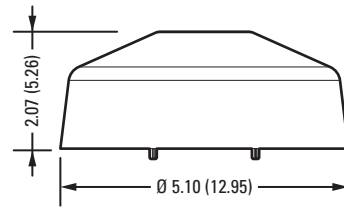
C2249 / REVISED 12-20-13

TECHNICAL SPECIFICATIONS

PENDANT MOUNT FEATURES

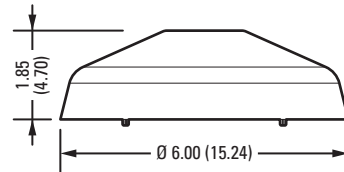
IS20-P

- Pendant mount for IS20-CH and IS20-DN Series cameras
- Color matched ABS plastic construction
- Accepts 0.75-inch and 25 mm conduit fittings
- Indoor use
- Provides an attractive mounting alternative when surface or flush mounting is not available



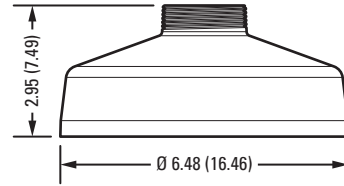
IS20DWS-P

- Pendant mount for IS20-DWS Series cameras
- Color matched ABS plastic construction
- Accepts 0.75-inch and 25 mm conduit fittings
- Indoor use
- Provides an attractive mounting alternative when surface or flush mounting is not available



IS50-P

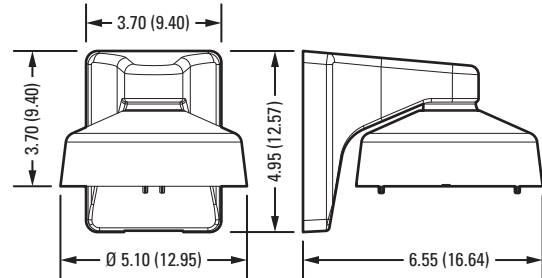
- Pendant mount for all IS50 Series cameras
- Durable all-aluminum construction
- 1.5-inch NPT thread for easy adaptation to any environment or Pelco mount
- Rugged/outdoor use
- Provides an attractive mounting alternative when surface or flush mounting is not available



WALL MOUNT FEATURES

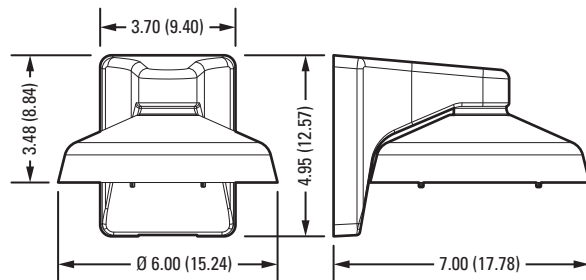
IS20-WM

- Integrated wall mount for IS20-CH and IS20-DN Series cameras
- Color matched ABS plastic construction
- Mounts to a flat wall
- Indoor use
- Internal cable pass for a neat installation
- Junction box adapter included



IS20DWS-WM

- Integrated wall mount for IS20-DWS Series cameras
- Color matched ABS plastic construction
- Mounts to a flat wall
- Indoor use
- Internal cable pass for a neat installation
- Junction box adapter included



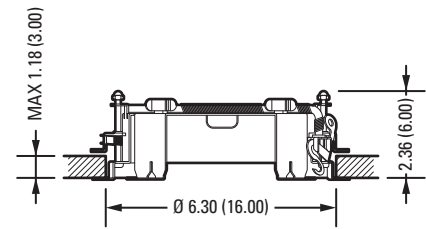
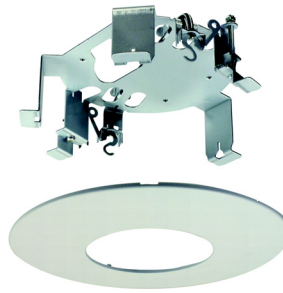
NOTE: VALUES IN PARENTHESES ARE CENTIMETERS; ALL OTHERS ARE INCHES.

TECHNICAL SPECIFICATIONS

FLUSH KIT FEATURES

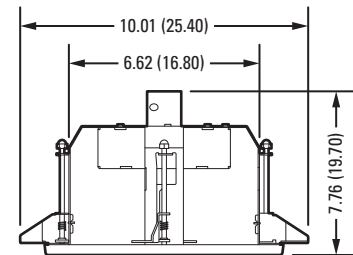
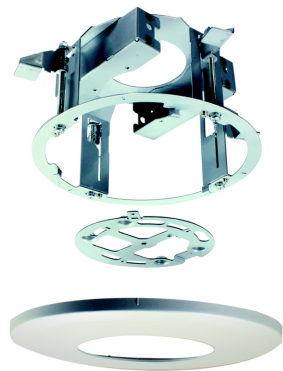
IS20-FK

- Adapts IS20-CH and IS20-DN Series surface mount cameras for flush (in-ceiling) applications
- Indoor use
- Durable construction
- Easy to install
- Color matched trim ring included



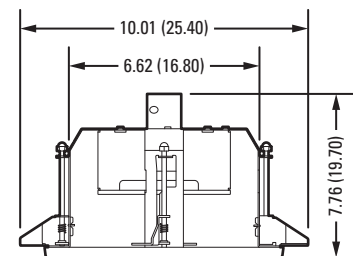
IS20DWS-FK

- Adapts IS20-DWS Series surface mount cameras for flush (in-ceiling) applications
- Indoor use
- Durable construction
- Easy to install
- Color matched trim ring included



IS50-FK

- Adapts all IS50 Series surface mount cameras for flush (in-ceiling) applications
- Indoor use or weather-protected outdoor use
- Durable construction
- Easy to install
- Color matched trim ring included



NOTE: VALUES IN PARENTHESES ARE CENTIMETERS; ALL OTHERS ARE INCHES.

TECHNICAL SPECIFICATIONS

IS20-CH/IS20-DN CAMCLOSURE 2 SERIES

MODELS

IS20-P	Pendant mount adapter
IS20-WM	Wall mount adapter
IS20-FK	Flush mount kit

MECHANICAL

Suggested Mounting Method	
IS20-P	Attach to a mount using 3/4-inch NPT or 25 mm conduit fitting
IS20-WM	Install the adapter plate (supplied) on a wall or junction box using appropriate hardware; attach wall mount to adapter plate; attach the camera with hardware supplied with mount
IS20-FK	Use the template (supplied) to cut a mounting hole; secure the flush kit with the attached spring hooks and clamping screws; attach the camera with four fixing screws (supplied); secure the flush mount cover with the attached spring hooks

GENERAL

Construction		
IS20-P	ABS plastic	
IS20-WM	ABS plastic	
IS20-FK	Steel and ABS plastic	
Finish	White	
Weight	Unit	Shipping
IS20-P	0.20 lb (0.09 kg)	1 lb (0.45 kg)
IS20-WM	0.62 lb (0.28 kg)	2 lb (0.90 kg)
IS20-FK	0.62 lb (0.28 kg)	2 lb (0.90 kg)

IS20-DWS CAMCLOSURE 2 SERIES

MODELS

IS20DWS-P	Pendant mount adapter
IS20DWS-WM	Wall mount adapter
IS20DWS-FK	Flush mount kit

MECHANICAL

Suggested Mounting Method	
IS20DWS-P	Attach using 3/4-inch NPT or 25 mm conduit fitting
IS20DWS-WM	Install adapter plate (supplied) on wall or junction box using appropriate hardware; attach wall mount to adapter plate; attach camera with hardware supplied with mount
IS20DWS-FK	Use the template (supplied) to cut a mounting hole; install two M10 anchor bolts (not supplied) into the ceiling; attach the flush mount kit using the safety chain (supplied) and hardware (supplied); mount the camera and attach the flush mount cover

GENERAL

Construction		
IS20DWS-P	ABS plastic	
IS20DWS-WM	ABS plastic	
IS20DWS-FK	Steel and ABS plastic	
Finish	White	
Weight	Unit	Shipping
IS20DWS-P	0.22 lb (0.10 kg)	1 lb (0.45 kg)
IS20DWS-WM	0.64 lb (0.29 kg)	2 lb (0.90 kg)
IS20DWS-FK	1.61 lb (0.73 kg)	4 lb (1.47 kg)

IS50 CAMCLOSURE 2 SERIES

MODELS

IS50-P	Pendant mount adapter (can be paired with SWM-SR for wall mount applications)
IS50-FK	Flush mount kit

MECHANICAL

Suggested Mounting Method	
IS50-P	Attach to a mount using 1.5-inch NPT male threads
IS50-FK	Use the template (supplied) to cut a mounting hole; install two M10 anchor bolts (not supplied) into the ceiling; attach the flush mount kit using the safety chain (supplied) and hardware (supplied); mount the camera and attach the flush mount cover (supplied)

GENERAL

Construction		
IS50-P	Cast aluminum	
IS50-FK	Steel and ABS plastic	
Finish		
IS50-P	Powder coat, light gray	
IS50-FK	Light gray	
Weight	Unit	Shipping
IS50-P	0.76 lb (0.34 kg)	2 lb (0.90 kg)
IS50-FK	1.54 lb (0.70 kg)	4 lb (1.44 kg)

OPTIONAL MOUNT ADAPTERS

SWM-SR	Compact wall mount, light gray finish. Can be used with FD5 series cameras for wall-mount installations. Can also be adapted for corner or pole applications.
IWM-SR	Wall mount; light gray finish. Can be adapted for corner, parapet, or pole applications.
IWM24-SR	Wall mount; light gray finish; with integrated 24 VAC 100 VA transformer. Can be adapted for corner, parapet, or pole applications.

Pelco by Schneider Electric

3500 Pelco Way, Clovis, California 93612-5699 United States

USA & Canada Tel (800) 289-9100 Fax (800) 289-9150

International Tel +1 (559) 292-1981 Fax +1 (559) 348-1120

www.pelco.com www.pelco.com/community

Pelco, the Pelco logo, and other trademarks associated with Pelco products referred to in this publication are trademarks of Pelco, Inc. or its affiliates. ONVIF and the ONVIF logo are trademarks of ONVIF Inc. All other product names and services are the property of their respective companies.

Product specifications and availability are subject to change without notice.

©Copyright 2013, Pelco, Inc. All rights reserved.