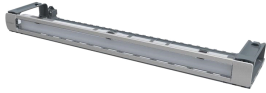


## AGILE panel 1U Jumper Management Trough



### Product Classification

<b>Portfolio</b>	CommScope®
<b>Product Type</b>	Trough
<b>Regional Availability</b>	Asia   Australia/New Zealand   EMEA   Latin America   North America

### General Specifications

<b>Rack Units</b>	1.0
<b>Shelf Movement</b>	Fixed
<b>Application</b>	For flat front AGILE panels, replacement of 360G2 series troughs or to retrofit to 600G2 shelves   Retrofit is not possible for rev 2.0 and older G2 1U modular and faceplates or rev 6 and older internal sliding shelves

### Regulatory Compliance/Certifications

<b>Agency</b>	<b>Classification</b>
RoHS 2011/65/EU	Compliant
ISO 9001:2015	Designed, manufactured and/or distributed under this quality management system

