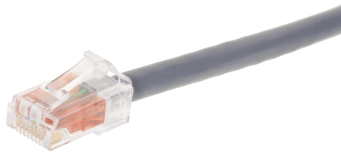


POWERED BY

SYSTIMAX®

CPC3312-03 | GS8E-DG

GigaSPEED XL® GS8E Stranded Cordage Modular Patch Cord, Dark Gray Jacket

Dimensions

Cord Length, maximum	30 m 100 ft
Cord Length, minimum	1 m 1 ft

Electrical Specifications

ANSI/TIA Category	6
dc Resistance, maximum	0.30 ohm
Safety Voltage Rating	300 V

Environmental Specifications

Environmental Space	Non-plenum
Flammability Rating	UL 94 V-0
Operating Temperature	-10 °C to +60 °C (+14 °F to +140 °F)
Safety Standard	Anatel cETL ETL

General Specifications

Cable Type	U/UTP (unshielded)
Interface, connector A	RJ45 plug
Interface, connector B	RJ45 plug
Jacket Color	Dark gray
Brand	GigaSPEED XL® SYSTIMAX®
Interface Feature, connector A	Standard
Interface Feature, connector B	Standard
Package Quantity	1
Pairs, quantity	4

Mechanical Specifications

Conductor Type	Stranded
Material Type	Copper alloy Polycarbonate
Outlet/Module Contact Plating	Precious metals
Plug Insertion Life, minimum	750 times
Plug Retention Force, minimum	133 N 30 lbf
Wiring	T568B

Wiring Diagram

	Connector A	Connector B
Position 1	White/Orange	White/Orange
Position 2	Orange	Orange
Position 3	Lt. Green	Lt. Green
Position 4	Blue	Blue
Position 5	Lt. Blue	Lt. Blue
Position 6	Green	Green
Position 7	Lt. Brown	Lt. Brown
Position 8	Brown	Brown

Regulatory Compliance/Certifications

Agency

RoHS 2011/65/EU
ISO 9001:2008

Classification

Compliant
Designed, manufactured and/or distributed under this quality management system



Included Products

860017029 | 1074E DG 4/24 RVAR (Product Component—not orderable) — GigaSPEED XL® 1074E Category 6 U/UTP Cable, non-plenum, dark gray jacket, 4 pair count, variable length, reel