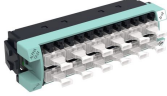


InstaPATCH® 360, LazrSPEED® SYSTIMAX 360 Distribution Panel
24 LC, Aqua



Product Classification

| | |
|------------------------------|---|
| Regional Availability | Asia Australia/New Zealand EMEA Latin America North America |
| Portfolio | CommScope® |
| Product Type | Fiber adapter pack |

General Specifications

| | |
|------------------------------|--|
| Adapter Color | Aqua |
| Application | Used in conjunction with G2 1U, 2U and 4U MOD panel shelves, surface mount and raised floor enclosures |
| Body Style | Ganged |
| Intelligence Type | iPatch® ready |
| Interface | LC |
| Interface Feature | Standard |
| Shuttered | No |
| Total Ports, quantity | 24 |

Optical Specifications

| | |
|-------------------|-----------|
| Fiber Mode | Multimode |
|-------------------|-----------|

Regulatory Compliance/Certifications

| Agency | Classification |
|---------------|--|
| CHINA-ROHS | Below maximum concentration value |
| ISO 9001:2015 | Designed, manufactured and/or distributed under this quality management system |
| REACH-SVHC | Compliant as per SVHC revision on www.commscope.com/ProductCompliance |
| ROHS | Compliant |

