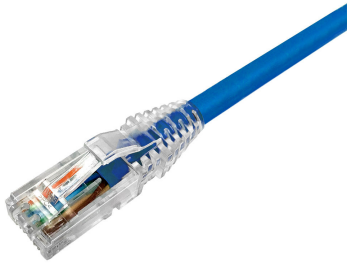


NPC06UVDB-BL



NPC RJ45 Patch Cord, category 6, Unshielded, CM (PVC), Blue

- High-performance patch cords exceeding industry standards supporting NETCONNECT channel specifications
- Standardized transparent, slim-line boots provides consistent patch cord appearance and supports highest density applications
- Colored clips are available to fit the transparent boot, eliminating the need of multiple colors for matching every jacket color
- Colored pull latch tabs are available for easier plug release handling from the modular jack

Product Classification

Regional Availability	Asia Australia/New Zealand Latin America
Portfolio	NETCONNECT®
Product Type	Twisted pair patch cord
Product Series	NPC

General Specifications

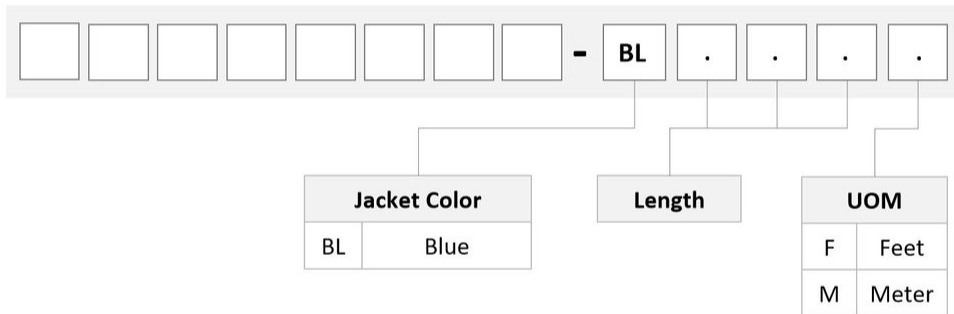
ANSI/TIA Category	6
Cable Type	U/UTP (unshielded)
Conductor Type	Stranded
Interface Feature, connector A	Standard
Interface Feature, connector B	Standard
Interface, Connector A	RJ45 plug
Interface, Connector B	RJ45 plug
Jacket Color	Blue
Pairs, quantity	4
Wiring	T568B

Dimensions

Cable Assembly Length, minimum (ft)	1
Cable Assembly Length, maximum (ft)	100
Diameter Over Jacket	5.97 mm 0.235 in
Compatible Conductor Gauge, stranded	24 AWG

Ordering Tree

NPC06UVDB-BL



Material Specifications

Insulation Material Polyethylene

Material Type PVC

Mechanical Specifications

Plug Insertion Life, minimum 750 times

Environmental Specifications

Operating Temperature -20 °C to +60 °C (-4 °F to +140 °F)

Relative Humidity Up to 93%, non-condensing

Environmental Space Non-plenum

Flammability Rating CM

NPC06UVDB-BL

Safety Standard UL 1863

Packaging and Weights

Packaging quantity 1

Regulatory Compliance/Certifications

Agency

RCM

Classification

Compliant to electrical safety, EMC, EME & telecommunications requirements



Included Products

2843020-3
MP-6AU-Boot-59-1 — Integrated Boot and Pair Manager for MP-6AU, size 59, transparent

6-2843007-1
MP-6AU-Plug-A-1 — Modular Plug, Category 6A/6, Unshielded, Cond Insulation OD - 0.99mm, 100 pcs

CC8862744/BU
CC6CM BLU 4/24 SR U/UTP RL BULK — CC6CM Category 6 U/UTP Cable, non-plenum, blue jacket, 4 pair bulk length reel