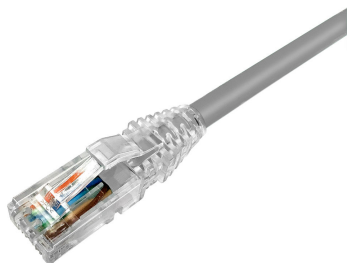


C0155D2-0C | C05E-U-CM-GY



Category 5e U/UTP Patch Cord, RJ45 to RJ45, 4-pair, Non-Plenum, Gray Jacket

Product Classification

Regional Availability	Asia Australia/New Zealand Latin America North America
Portfolio	CommScope®
Product Type	Twisted pair patch cord

General Specifications

ANSI/TIA Category	5e
Cable Type	U/UTP (unshielded)
Conductor Type	Stranded
Interface Feature, connector A	Standard
Interface Feature, connector B	Standard
Interface, Connector A	RJ45 plug
Interface, Connector B	RJ45 plug
Jacket Color	Gray
Pairs, quantity	4
Wiring	T568B

Dimensions

Cable Assembly Length, minimum (ft)	1
Cable Assembly Length, maximum (ft)	100
Cable Assembly Length, minimum (m)	1
Cable Assembly Length, maximum (m)	30

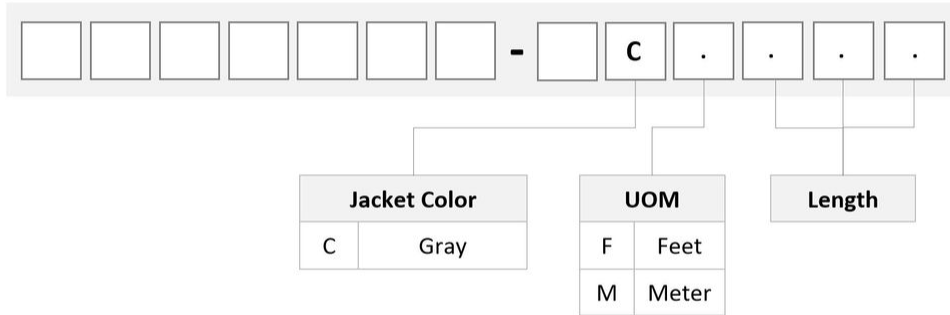
Wiring Diagram

	Connector A	Connector B
Position 1	White/Orange	White/Orange
Position 2	Orange	Orange
Position 3	Lt. Green	Lt. Green
Position 4	Blue	Blue
Position 5	Lt. Blue	Lt. Blue
Position 6	Green	Green
Position 7	Lt. Brown	Lt. Brown
Position 8	Brown	Brown

Electrical Specifications

dc Resistance, maximum	0.3 ohm
Safety Voltage Rating	300 V

Ordering Tree



Material Specifications

Contact Plating Material Gold in remating area | Nickel underplating
Material Type Phosphor Bronze | Polycarbonate

Mechanical Specifications

Plug Insertion Life, minimum 750 times
Plug Retention Force, minimum 133 N | 29.9 lbf

Environmental Specifications

Operating Temperature -10 °C to +60 °C (+14 °F to +140 °F)
Environmental Space Non-plenum
Flammability Rating CM

CO155D2-0C | CO5E-U-CM-GY

Safety Standard

ETL | cETL

Packaging and Weights

Packaging quantity

1

Regulatory Compliance/Certifications

Agency

ISO 9001:2015

Classification

Designed, manufactured and/or distributed under this quality management system



Included Products

CC4656044/BU
CC5ECM GRY 4/24 SR U/UTP RL BULK — CC5ECM Category 5e U/UTP Cable, non-plenum, gray jacket, 4 pair count, bulk length, reel