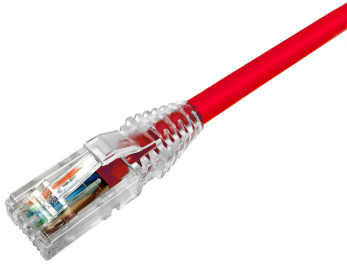


# NPC06UVDB-RD



## NPC RJ45 Patch Cord, category 6, Unshielded, CM (PVC), Red

- High-performance patch cords exceeding industry standards supporting NETCONNECT channel specifications
- Standardized transparent, slim-line boots provides consistent patch cord appearance and supports highest density applications
- Colored clips are available to fit the transparent boot, eliminating the need of multiple colors for matching every jacket color
- Colored pull latch tabs are available for easier plug release handling from the modular jack

## Product Classification

<b>Regional Availability</b>	Asia   Australia/New Zealand   Latin America
<b>Portfolio</b>	NETCONNECT®
<b>Product Type</b>	Twisted pair patch cord
<b>Product Series</b>	NPC

## General Specifications

<b>ANSI/TIA Category</b>	6
<b>Cable Type</b>	U/UTP (unshielded)
<b>Conductor Type</b>	Stranded
<b>Interface Feature, connector A</b>	Standard
<b>Interface Feature, connector B</b>	Standard
<b>Interface, Connector A</b>	RJ45 plug
<b>Interface, Connector B</b>	RJ45 plug
<b>Jacket Color</b>	Red
<b>Pairs, quantity</b>	4
<b>Wiring</b>	T568B

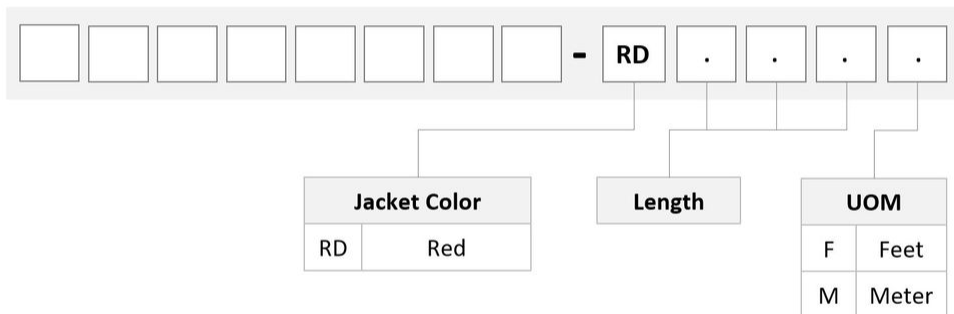
## Dimensions

<b>Cable Assembly Length, minimum (ft)</b>	1
<b>Cable Assembly Length, maximum (ft)</b>	100
<b>Diameter Over Jacket</b>	5.97 mm   0.235 in
<b>Compatible Conductor Gauge, stranded</b>	24 AWG

## Ordering Tree

# NPC06UVDB-RD

---



## Material Specifications

<b>Insulation Material</b>	Polyethylene
<b>Material Type</b>	PVC

## Mechanical Specifications

<b>Plug Insertion Life, minimum</b>	750 times
-------------------------------------	-----------

## Environmental Specifications

<b>Operating Temperature</b>	-20 °C to +60 °C (-4 °F to +140 °F)
<b>Relative Humidity</b>	Up to 93%, non-condensing
<b>Environmental Space</b>	Non-plenum
<b>Flammability Rating</b>	CM

# NPC06UVDB-RD

---

**Safety Standard** UL 1863

## Packaging and Weights

**Packaging quantity** 1

## Regulatory Compliance/Certifications

### Agency

RCM

### Classification

Compliant to electrical safety, EMC, EME & telecommunications requirements



## Included Products

2843020-3  
MP-6AU-Boot-59-1 — Integrated Boot and Pair Manager for MP-6AU, size 59, transparent

6-2843007-1  
MP-6AU-Plug-A-1 — Modular Plug, Category 6A/6, Unshielded, Cond Insulation OD - 0.99mm, 100 pcs

CC8863544/BU  
CC6CM RED 4/24 SR U/UTP RL BULK — CC6CM Category 6 U/UTP Cable, non-plenum, red jacket, 4 pair count, bulk length, reel