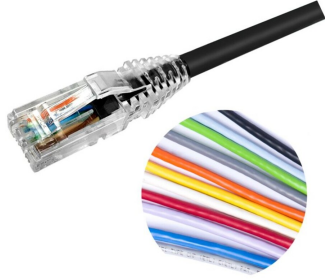


# NPC06UZDB



## NPC RJ45 Patch Cord, category 6, U/UTP, LSZH

- High-performance patch cords exceeding industry standards supporting NETCONNECT channel specifications
- Standardized transparent, slim-line boots provides consistent patch cord appearance and supports highest density applications
- Colored clips are available to fit the transparent boot, eliminating the need of multiple colors for matching every jacket color
- Colored pull latch tabs are available for easier plug release handling from the modular jack

## Product Classification

<b>Regional Availability</b>	Asia   EMEA   Latin America
<b>Portfolio</b>	NETCONNECT®
<b>Product Type</b>	Twisted pair patch cord
<b>Product Series</b>	NPC
<b>Ordering Note</b>	Cords < 1 m are valid elements for use in a channel or as an equipment interconnect but due to their limited length are not guaranteed to meet component compliance requirements that were developed to assess the quality of longer cords   Cords > 1 m are authorized for use in channels and are an effective standalone method used to connect active devices

## General Specifications

<b>ANSI/TIA Category</b>	6
<b>Application</b>	Accepts one PNL-type adapter if splicing
<b>Cable Type</b>	U/UTP (unshielded)
<b>Conductor Type</b>	Stranded
<b>Interface, Connector A</b>	RJ45 plug
<b>Interface Feature, connector A</b>	Standard
<b>Interface, Connector B</b>	RJ45 plug
<b>Interface Feature, connector B</b>	Standard
<b>Jacket Color</b>	Black   Blue   Green   Orange   Red   Slate   White   Yellow
<b>Pairs, quantity</b>	4
<b>Transmission Standards</b>	ANSI/TIA-568.2-D   IEEE 802.3bt Type 4   ISO/IEC 11801 Class E
<b>Wiring</b>	T568B

## Dimensions

# NPC06UZDB

---

<b>Cable Assembly Length Range (m)</b>	1 – 30
<b>Cable Assembly Length Range (ft)</b>	1 – 100
<b>Cable Assembly Length Range (cm)</b>	15 – 999
<b>Cable Assembly Length Range (in)</b>	6 – 999
<b>Diameter Over Jacket</b>	5.97 mm   0.235 in
<b>Compatible Conductor Gauge, stranded</b>	24 AWG

## Mechanical Specifications

<b>Plug Insertion Life, minimum</b>	750 times
-------------------------------------	-----------

## Environmental Specifications

<b>Operating Temperature</b>	-20 °C to +60 °C (-4 °F to +140 °F)
<b>Relative Humidity</b>	Up to 93%, non-condensing
<b>Environmental Space</b>	Low Smoke Zero Halogen (LSZH)
<b>Safety Standard</b>	C-Tick   UL 1863

## Packaging and Weights

<b>Packaging quantity</b>	1
---------------------------	---

## Included Products

2843020-3 MP-6AU-Boot-59-1	–	Integrated Boot and Pair Manager for MP-6AU, size 59, transparent
6-2843007-1 MP-6AU-Plug-A-1	–	Modular Plug, Category 6A/6, Unshielded, Cond Insulation OD - 0.99mm, 100 pcs