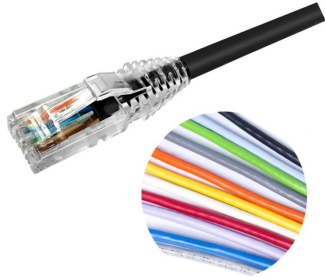


# NPC06UZDB

## Base Product



## NETCONNECT® Cat 6 U/UTP RJ45 Patch Cord, LSZH

- High-performance patch cords exceeding industry standards supporting NETCONNECT channel specifications
- Standardized transparent, slim-line boots provides consistent patch cord appearance and supports highest density applications
- Colored clips are available to fit the transparent boot, eliminating the need of multiple colors for matching every jacket color
- Colored pull latch tabs are available for easier plug release handling from the modular jack

## Product Classification

<b>Regional Availability</b>	Asia   EMEA   Latin America
<b>Portfolio</b>	NETCONNECT®
<b>Product Type</b>	Twisted pair patch cord
<b>Product Series</b>	NPC
<b>Ordering Note</b>	Cords < 1 m are valid elements for use in a channel or as an equipment interconnect but due to their limited length are not guaranteed to meet component compliance requirements that were developed to assess the quality of longer cords   Cords > 1 m are authorized for use in channels and are an effective standalone method used to connect active devices

## General Specifications

<b>Product Number</b>	CC6ZH
<b>ANSI/TIA Category</b>	6
<b>Cable Type</b>	U/UTP (unshielded)
<b>Conductor Type</b>	Stranded
<b>Interface, Connector A</b>	RJ45 plug
<b>Interface Feature, connector A</b>	Standard
<b>Interface, Connector B</b>	RJ45 plug
<b>Interface Feature, connector B</b>	Standard
<b>Jacket Color</b>	Black   Blue   Green   Orange   Red   Slate   White   Yellow
<b>Pairs, quantity</b>	4
<b>Separator Type</b>	Bisector
<b>Transmission Standards</b>	ANSI/TIA-568.2-D   IEEE 802.3bt Type 4   ISO/IEC 11801 Class E
<b>Wiring</b>	T568B

# NPC06UZDB

## Dimensions

<b>Cable Assembly Length Range (m)</b>	1 – 30
<b>Cable Assembly Length Range (ft)</b>	1 – 100
<b>Cable Assembly Length Range (cm)</b>	15 – 999
<b>Cable Assembly Length Range (in)</b>	6 – 999
<b>Diameter Over Jacket</b>	5.97 mm   0.235 in
<b>Compatible Conductor Gauge, stranded</b>	24 AWG

## Electrical Specifications

<b>Nominal Velocity of Propagation (NVP)</b>	69 %
<b>Remote Powering</b>	Fully complies with the recommendations set forth by IEEE 802.3bt (Type 4) for the safe delivery of power over LAN cable when installed according to ISO/IEC 14763-2, CENELEC EN 50174-1, CENELEC EN 50174-2 or TIA TSB-184-A

## Ordering Tree

NPC       -

### Jacket Color

10	BK	Black
	BL	Blue
	GN	Green
	GY	Gray
	OR	Orange
	PK	Pink
	RD	Red
	WT	White
	YL	Yellow

### UOM

11	F	Foot
	M	Meter
	N	Inch
	C	Centimeter

### Length

12	XXX
----	-----

### Notes

- Cords > 1m are authorized for use in channels and are an effective standalone method used to connect active devices
- Cords < 1m are also valid elements for use in a channel or as an equipment interconnect but due to their limited length are not guaranteed to meet component compliance requirements that were developed to assess the quality of longer cords

## Material Specifications

<b>Conductor Material</b>	Tin plated copper
---------------------------	-------------------

## Mechanical Specifications

<b>Plug Insertion Life, minimum</b>	750 times
-------------------------------------	-----------

## Environmental Specifications

# NPC06UZDB

---

<b>Operating Temperature</b>	-20 °C to +60 °C (-4 °F to +140 °F)
<b>Relative Humidity</b>	Up to 93%, non-condensing
<b>EN50575 CPR Cable EuroClass Fire Performance</b>	Dca
<b>EN50575 CPR Cable EuroClass Smoke Rating</b>	s2
<b>EN50575 CPR Cable EuroClass Droplets Rating</b>	d2
<b>EN50575 CPR Cable EuroClass Acidity Rating</b>	a1
<b>Environmental Space</b>	Low Smoke Zero Halogen (LSZH)
<b>Flame Test Method</b>	IEC 60332-3
<b>Safety Standard</b>	C-Tick   UL 1863
<b>Smoke Test Method</b>	IEC 61034-2

## Packaging and Weights

<b>Packaging quantity</b>	1
---------------------------	---

## Regulatory Compliance/Certifications

<b>Agency</b>	<b>Classification</b>
CHINA-ROHS	Below maximum concentration value
ISO 9001:2015	Designed, manufactured and/or distributed under this quality management system
RCM	Compliant to electrical safety & telecommunications requirements
REACH-SVHC	Compliant as per SVHC revision on <a href="http://www.commscope.com/ProductCompliance">www.commscope.com/ProductCompliance</a>
ROHS	Compliant
UK-ROHS	Compliant



## Included Products

2843020-3 MP-6AU-Boot-59-1	-	Integrated Boot and Pair Manager for MP-6AU, size 59, transparent
6-2843007-1 MP-6AU-Plug-A-1	-	Modular Plug, Category 6A/6, Unshielded, Cond Insulation OD - 0.99mm, 100 pcs